



50 CC



Alshaali
Marine



الشعالي
مارين

History

Since 1979, AS Marine, owned and managed by the Al Shaali Group, has focused on quality, comfort, performance and style throughout its yachts' line-ups. A dedicated team of specialists do their level best to satisfy yachtsmen every day, combining technology and premium materials with detailed finish to meet AS Marine's standards of excellence.

AS Marine is considered a pioneer in yacht manufacturing in the Middle East with fiberglass boats. The company paved the way for marine business to flourish and evolve, opening doors to trade business while contributing to the local economy.

50 CC

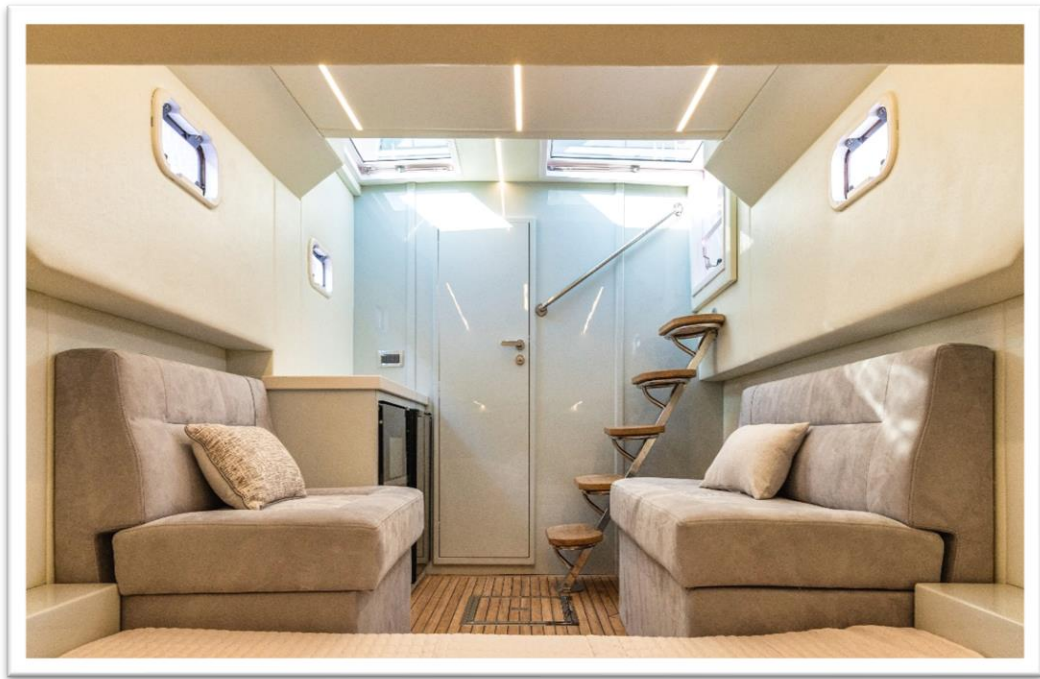
Centre-Console Sports Boat

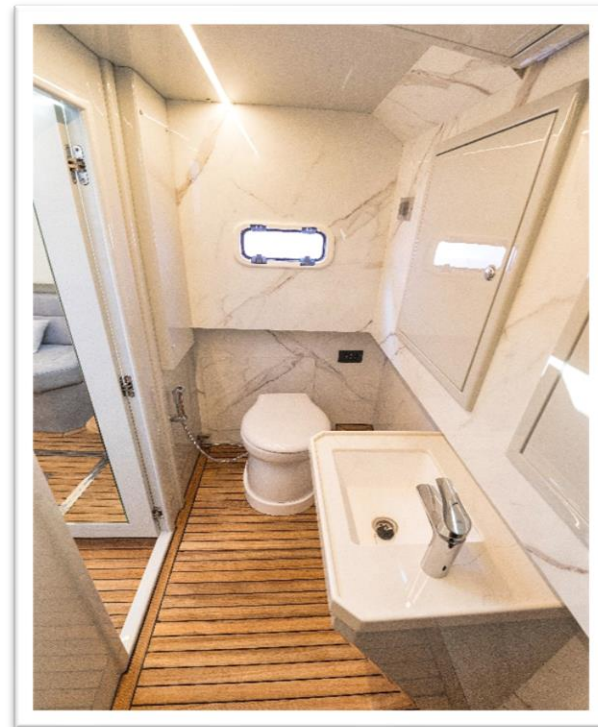
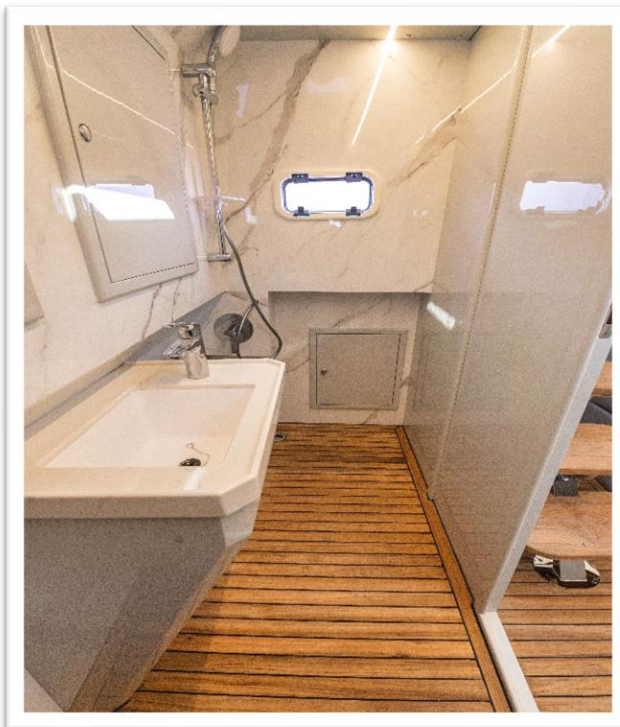
Stylish and brighter than ever with more luxury touches and practical enhancements, With the step-hull, Sporty centre console cruises into the water like a real hunter.

50 Sport Centre Console boat is a completely improved model from the previous generation flashing in beautiful colour combinations. Superbly spacious and showing smartness and its power.

It comes with a cabin at the bow, a seating Sofa, BBQ, and restroom. It can accommodate up to 15 passengers while the layout features relaxing and sunbath area.



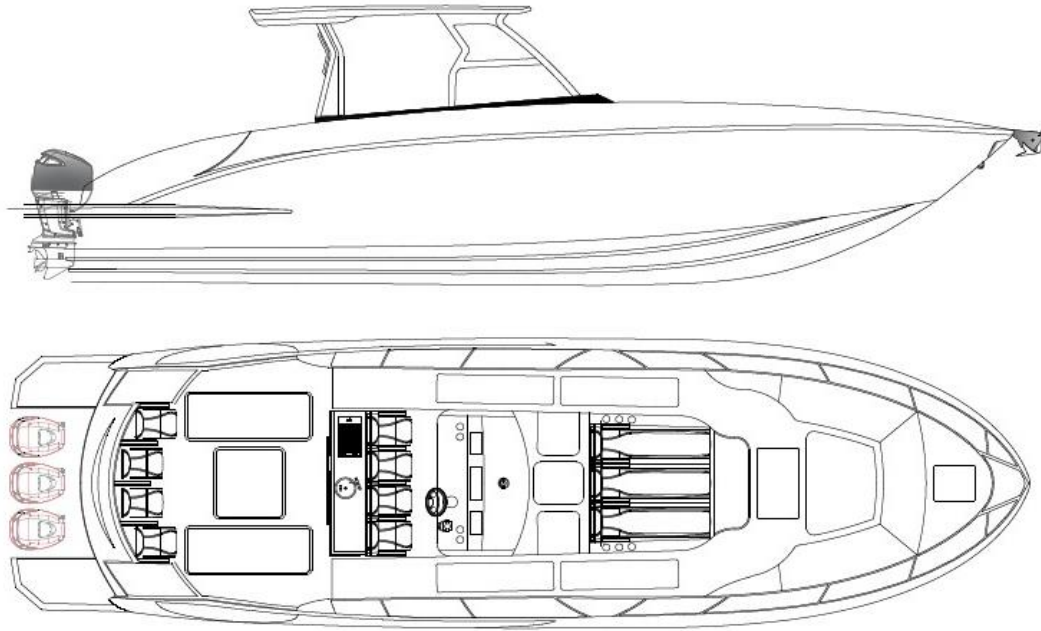












STANDARD SPECIFICATIONS

Hull Construction	GRP
Length Over All - LOA	50' (15 M)
Length Water Line	37.64' (11.47 M)
Beam Maximum	13.5' (4.11 M)
Draft (at full load)	2.5' (0.76 M)
Displacement	8 Tons.
Diesel Capacity	90 Gals (340 L)
Fresh Water Capacity	90 Gals (340 L)
Fuel Tank Capacity	752 Gals (2850 L)
Air Conditioning Chiller Water System	12K BTU
Marine Generator	3 KVA
Bedrooms	1
Berth	2
outboard Engines	300hpx3 or 400hpx3, 4-Stroke

Construction: -

- 100% gel coat finishing hand laid-up *solid* fiberglass hull.
- Fiberglass encapsulated *solid* hull stringers.
- Safety tempered windshield & Window glasses.
- Full set of bulkheads resulting in a *solid* integral package
- Bilges finishing with gel coat for ease of maintenance.
- Double finished hard top with *Honeycomb* in for stiffness and lighter weight

Cabin*1

- Standard Upholstered Interior
- Standard Furniture
- Queen Size Bed
- Upholstered ceiling
- Upholstered Seats (3 Persons)
- Wood and Glass Falcon door with Window
- Electric Switches
- Fittings & wooden floor
- Power sockets, Cup holders
- Glass Hatch (lockable)
- Std. lightings.
- Storage under seats
- Table

Toilet & Shower *1

- Corian top platform
- Wooden Door & Ceiling
- Towel handles, storage
- Porthole windows
- Standard lightings
- Std. Sanitary fittings & Wash basin
- Electric Switches
- Shower and mixer
- Teak flooring
- Electric Vacuum Elegant Toilet

Open Deck

- Fiber Helm (Console with switch panel)
- Standard lightings
- Glass windshield
- 3 Nos. Sports Seats including Captain
- Power sockets
- Electric Switches
- PVC or Fiber non-skid flooring
- Fiber Hardtop with SS support
- Sink and Mixer

Open Galley *1

- Std. Sanitary Fittings
- Wooden panelling
- Upholstered ceiling
- Standard Lightings
- Electric Switches
- Corian top kitchen platform
- Power sockets
- Wood floor
- Wooden drawer

Aft Area

- 4-seater upholstered Bench
- Storage under seat
- PVC or Fiber non-skid flooring
- Hand Shower
- 2 Fish tanks
- Fish rod holders - SS
- Openable equip. room hatch.
- Fuel cap & Water cap
- Dome Lights
- 2 Nos. LIVEWELL

Fiber Hard Top

- Navigation Lights
- LED Anchor Lights
- Horn
- Solar Panels
- Search Light with Installation

Bow Area

- PVC or Fiber non-skid flooring
- Sunbed (3 people)
- Winch & Anchor Chain storage
- SS handrails
- Hand shower
- U shape seating Upholstered bench (5 people) + 2 people seat.
- Storage under seats
- Pop-up Table (Option)

Walkaround

- PVC or Fiber non-skid flooring
- SS handrails & handles
- Storage floor tanks
- Upholstered Side Wall

Common Equipment's & Items

- AC-DC Switch Panels
- 8 X Cleats
- Built in Fuel Tank W/Fill & Vent Fittings
- Fresh water pump
- Fire extinguisher
- Standard Elec. Components
- Alu. Water tank & Black tank
- D-Fender
- Anti-fouling paint
- 2 Nos. Battery 270Ah Master Volt
- Battery Charger 24V
- Ladder 3 Step Fold way
- Light Search 135SL 24V
- Light Bar LED White Narrow * 2
- Bow protection plate.
- Seacocks & Air breather
- Carpentry fittings, locks, knobs
- Bilge Pump & Float switch
- Anode zinc Disc
- A/C grills
- Compass offshore
- Shore Power Sockets, Connectors & shore Cable (15mtrs)

Engines:

Mercury 3X400HP Outboard
with Installation

Navigation Package

- Garmin Gpsmap 8412Xsv, 12" worldwide
- Garmin Gmr 18 Hd+ Marine Radar Scanner
- Garmin Reactor 40 Hydraulic Core Pack with Smart pump V2 with Ghc 50 Autopilot Instrument.
- Garmin Vaw-450S-Blue Chart G3 Vision Gulf Sw
- Garmin Vhf 115I International
- Garmin Xdcr B60, 8Pin 600W, Tilted Brnz Thru Hull, 200/50Kh
- Garmin Gps 24Xd, Nmea 2000
- Garmin Nmea 2000 Starter Kit
- Garmin Nmea 2000 Backbone Cable (Nos. 2)
- Pacific Vhf 1.8M 6Db Ultra glass Antenna
- Pacific Vhf/Cellular Long Reach Pro Heavy Duty Mount

Appliances

- Refrigerator 51 Liters
- Kenyon Grill Floridian with Intelliken
- Ice Maker
- Microwave Oven
- Built In Ceramic Hob 60X30 Cm Siemens (Stove)

Entertainment System

- Fusion 4 Channel Marine Amp Ab Class Ms-Am504
- Fusion 3I Marine Speakers 6.5 (pair)
- Fusion Marine Entertainment System with Bluetooth
- Fusion Remote Control

Genset & Air Conditioning

- Generator 3Kva 240V 50Hz
- Air Condition 220V/50-60Hz/1Ph 12000 Btu*1
- 2 Nos. Battery Smf 120Ah 12V
- 1 Nos. Battery Smf 105Ah 12V
- Battery Charger

MISC. ITEMS

- 6 Nos. Heavy Duty Fender Polyform® With rope
- 8 Nos. Life Jackets
- 10 Nos. Sea blaze Quattro Underwater Lights
- Bar Led Light 200W Cree LEDs 15600 Lumens - 40"
- Ring Lifebuoy Classic 45X75 (1 no)
- Anchor 10 Kg With 8Mm Chain & Rope
- Dp3 1512D Windlass 1000W 12V 8Mm D

About Al Shaali Marine

Established in 1979 by Abdullah Al Shaali, AS Marine has inherited the proud boat building tradition that has earned the legendary Arabian seafarer and his crafts a proud place in world maritime history. Translated into modern design and technology, this tradition remains the foundation and mission of the AS Marine boats' building process. From the factory complex in the United Arab Emirates, a wide product range of luxury flybridge yachts are manufactured for domestic and worldwide markets.

AS Marine has received numerous awards from leading international bodies and won many of the industries famous quality certificates. AS Marine shows a combination of talent where design pleases, performance excites, and seagoing dependability means the safety and comfort of the owner and guest. Our signature is beauty and pride, and our clients receive nothing less. Look no further, you can truly have it all! AS Marine is making smart boating decisions easy.





📍 Al Shaali Marine, New Industrial Area P.O.Box 787
📞 +971 6 743 6443 ✉ info@alshaalimarine.com
🌐 www.alshaalimarine.com