



THE **AS-100** SUPER YACHT



Alshaali Group



مجموعة الشعالي



History

Since 1979, AS Marine, owned and managed by the Al Shaali Group, has focused on quality, comfort, performance and style throughout its yachts' line-ups. A dedicated team of specialists do their level best to satisfy yachtsmen every day, combining technology and premium materials with detailed finish to meet AS Marine's standards of excellence.

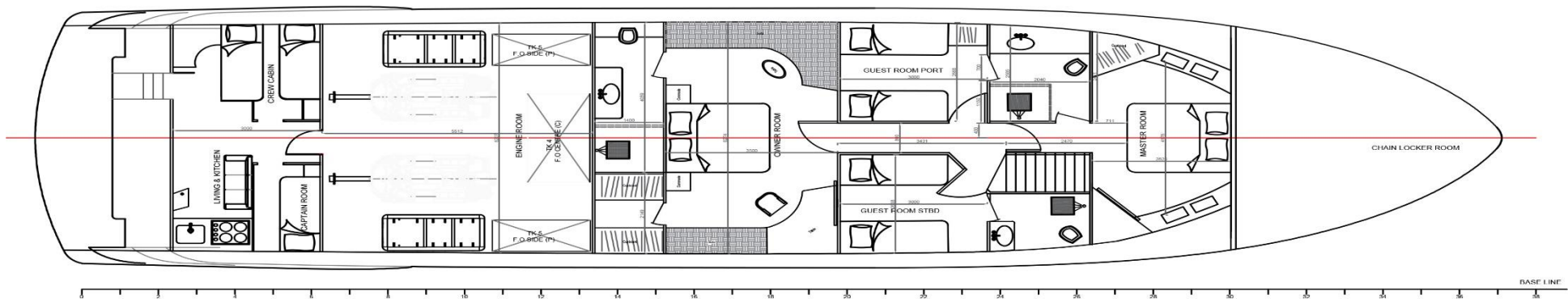
AS Marine is considered a pioneer in yacht manufacturing in the Middle East with fiberglass boats. The company paved the way for marine business to flourish and evolve, opening doors to trade business while contributing to the local economy.

Yachting Reinvented

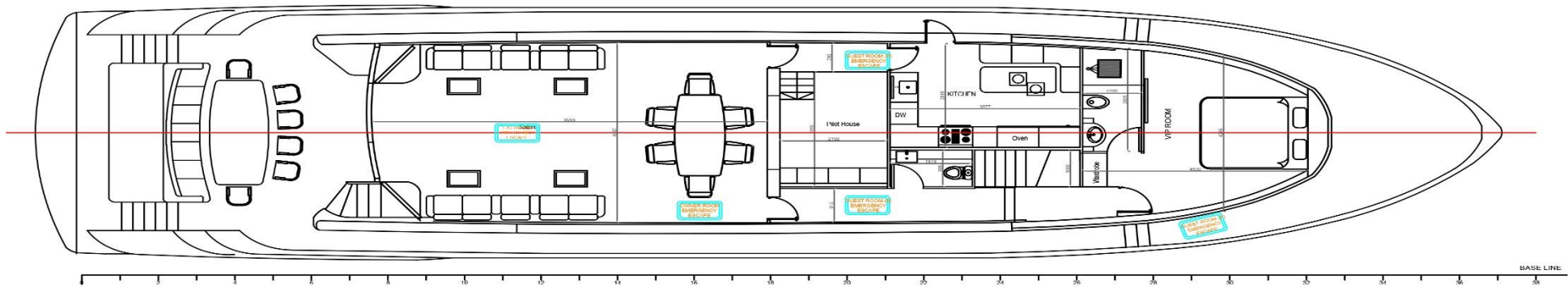
With this catalogue, we invite you to discover the brand-new AS 100 luxury Yacht, a broad range of yachts in AS Marine's ever-growing number of crafts, making a difference in the

industry. This difference is the result of strict requirements, fine-tuned designs, genuine craftsmanship and a company-wide dedication to deliver only the best products.

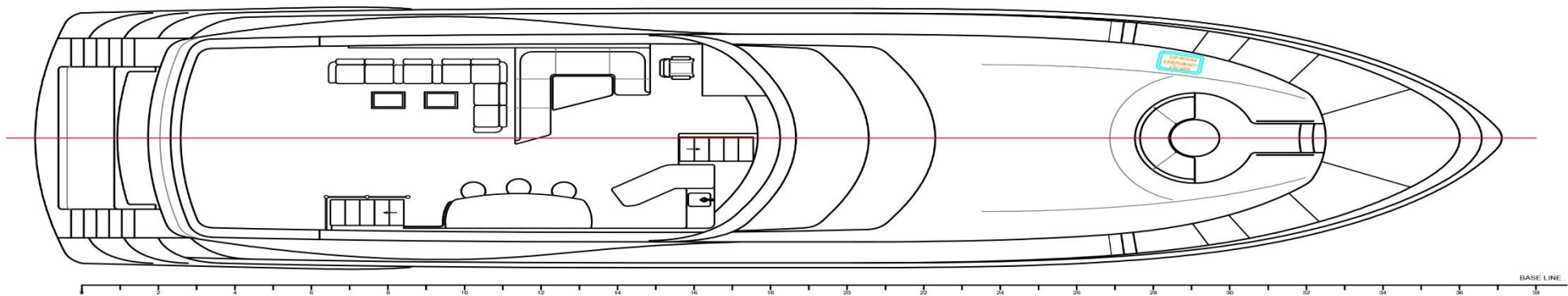




LOWER DECK



MAIN DECK



The AS 100 Luxury Yacht

At a glance, find yourself in a world of luxury with spacious interior, generous cockpit and hospitable flybridge.

The main deck boasts the salon and formal dining, set in an open plan surrounded by ample lounge seats bathed in sunlight, thanks to the broad side windows.

The flybridge creates a spacious gathering point, ideal for a sunset cruise or midday siesta. An abundance of space on all three decks. The clever seating arrangement on the flybridge allows for the placement of an optional hot tub, comfortable sunbeds, second steering station and a bar for the guests to enjoy.

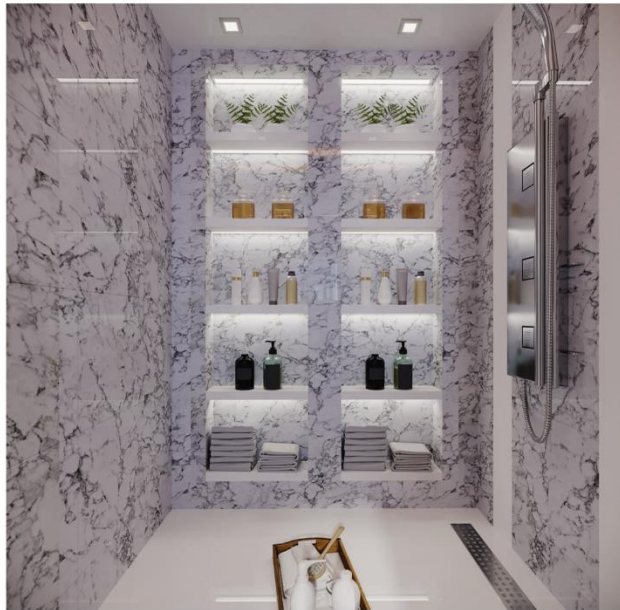
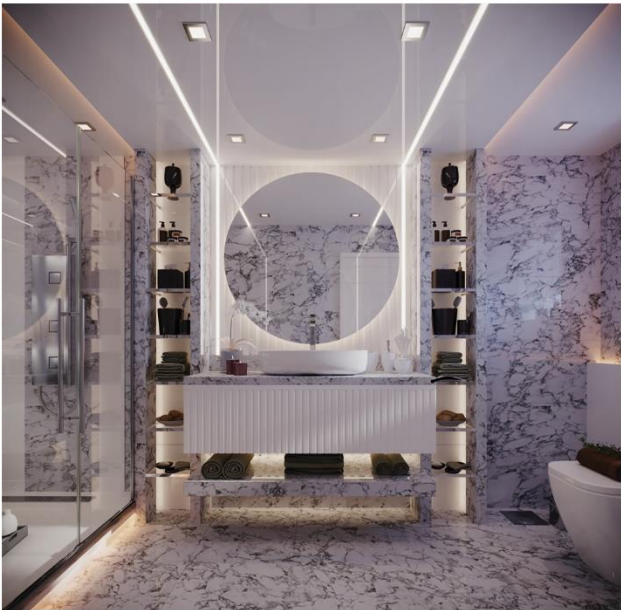
Below, all four guest quarters providing extra

comfort and privacy. The AS 100 allows in an impressive amount of natural light in any of the cabins. The spacious owner's cabin is fitted with a double bed and offers both an ensuite bathroom and a walk-in wardrobe. The spacious forward VIP cabin holds a variety of closets and storage spaces while both guest cabins, which are located at the sides of the yacht, have twin berths for a total of eight on the lower deck.

The captain will surely make use of the integrated monitoring system, which keeps track of all the important data, while the crew will appreciate their quarters with two beds, a galley and a separate bathroom.

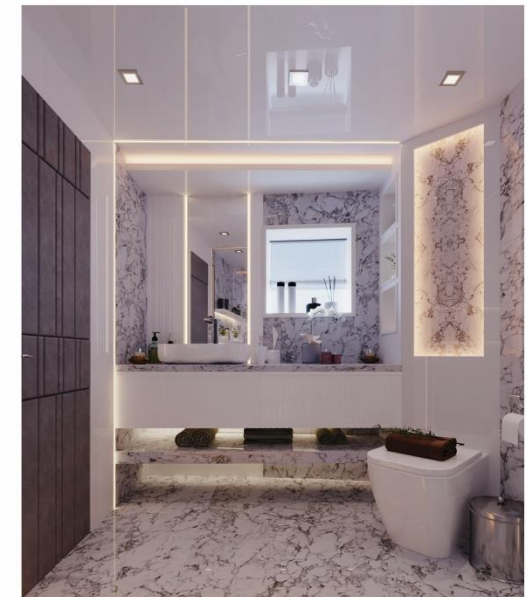
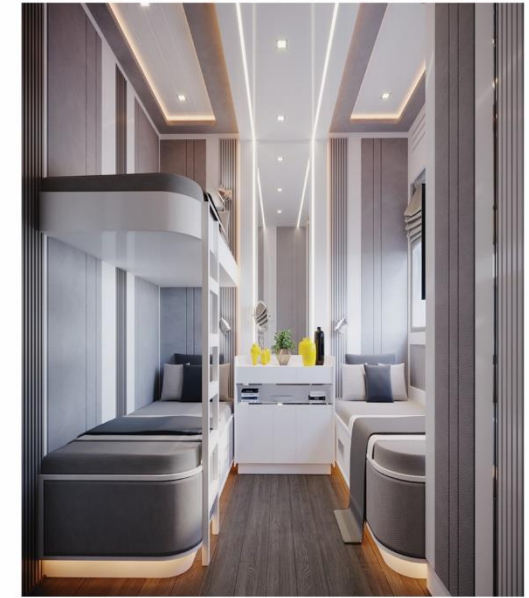
The powerful, hydraulic stern platform comes as Optional which will handle any watercraft.





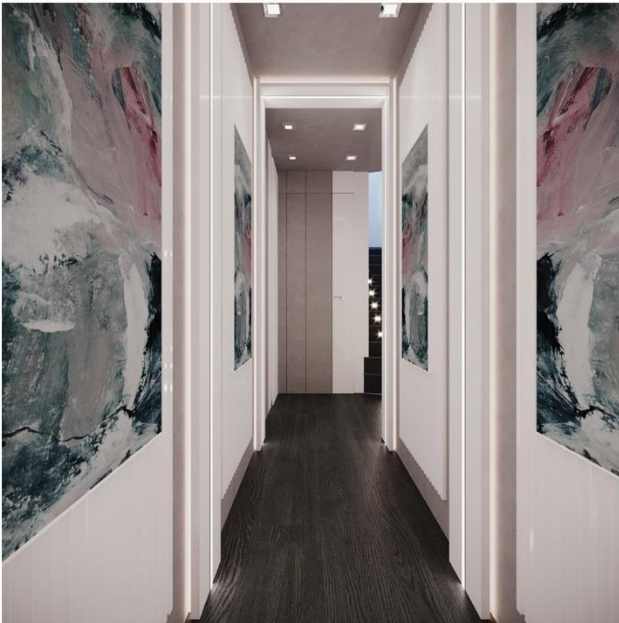
AS -100 Super Yacht AS Marine 08











Main Features

• Hull Construction	GRP
• Length Over All – LOA	100 Feet
• Length Water Line	85 Feet
• Beam Maximum	22.91 Feet
• Height above water Line	18 Feet
• Draft (at full load)	7.5 Feet
• Displacement	95 Tons
• Fuel Capacity	2900 Gals / 10,970 Liter
• Fresh Water Capacity	670 Gals / 2,536 Liter
• Black Water Tank	334 Gals / 1,265 Liter
• Gray Water Tank	334 Gals / 1,265 Liter
• Water Maker	Coral ECR 60–70 L/hour
• Bow Thruster / Rear Thruster	300 KGF/48 Volt
• Air Conditioning Chiller Water System	24 Tons
• Marine Generator	Twin 40 KVA
• Bedrooms	5+2
• Berth	12 + 5
• Head Compartment	5 + 1
• Water Heater	Quick 160 Liter
• Engine	2x1600hp MTU coupled with ZF Gear Box



Standard Specifications

CONSTRUCTION

- Hand laid combination mat with foam filled honeycomb cored hull, deck and flybridge
- Solid fiberglass laminate keel and chine's
- Splinter resistant gel coat below waterline
- High performance resistant exterior gel coat
- Foam core reinforced stringer system.

MECHANICAL

- Twin diesel engines with reduction gearing
- Under water main engine exhaust with idle by pass
- 5 bladed propellers
- Engine hour meters
- Electronic engine controls
- Electro-hydraulic steering
- Engine and generator mufflers
- Oil changing system for the engines and generators
- Engine room mechanical gauges
- Engine room blowers (2) 220 volt
- Manifold filter for generators
- Fuel filter for generators
- Main engine and generator sea strainer
- Acoustical and thermal insulation in engine room
- Fire protection system, automatic and manual
- Bilge pumps 24V
- Hand bilge pump
- Aluminum fuel tanks
- Holding tank with sewage treatment system
- Marine Water maker
- Marine Water heater 160 Liters
- Water system 24V
- Fresh and sea water fore and aft deck
- Dock side water connection with pressure reducing valve
- Sea cock, under water through-hulls-bronze
- Air-conditioning chiller system

ELECTRICAL

- Alarms for engines, bilge and generators, audible and visible
- Anchor light, 24v
- Batteries, heavy duty 24v (Set of Single Pcs)
- Battery chargers, 24v
- Bonded electrical system
- Color coded wiring system
- 150a/220v shore power inlet, port and starboard
- Automatic shore power cord reel, 24v
- Engine room lights
- Custom lighting throughout
- 2 x 40 KVA generator
- Instrumentation panel lighting
- Automation system
- Interior lighting, 220/24 with dim lighting.
- Master control panel with ac/dc circuit breaker, volt meters and amp meters
- Navigation lights, 24v
- 2 heavy duty capstans
- Search light with remote control upper and lower stations
- 2 heavy duty anchor winches 24v
- Deck lights 24v
- Satellite Antenna

FLYBRIDGE (As per Drawings)

- Wrap around seating around helm
- Steering Wheel
- Electronic engine controls
- Full instrumentation, lighted
- Stereo system
- Dashboard (console)
- Windshield
- Built ice maker and refrigerator
- Sink & Electric BBQ Grill system on top
- Radar arch
- Large sun top for forward helm area
- Access to stairs descending to aft deck
- Handrails, stainless steel
- Glass Holders distributed
- Star board & port side seat
- L-Shape chair with fixed table
- Extra Seating
- Access to pilot station with water tight hinge door.

AFT DECK

- Custom Burma teak decking
- Stairs access to transom sport deck with lights
- Boarding gates port and starboard
- Stainless steel railings
- Open aft deck
- Stairs to upper walkways
- Lighting under bridge
- Dining table with seats (for 12 pax.)
- Access to aft cleats and fuel/water fills
- Aft deck wash down
- Stereo speakers

TRANSOM SPORT DECK

- Stairs to the aft deck with lights
- Engine room door
- Fresh water shower, hot/.cold
- Custom teak decking

MAIN DECK

- Anchor chain, galvanized
- Anchor windlass, electric
- Stainless steel deck hatches
- Stainless steel rails
- Side walkways and fore deck with custom teak decking
- Fore deck wash down

MAIN SALOON (As per Drawings)

- Large leather upholstered couches portable
- Coffee tables
- Matching chairs
- Direct and indirect designer lighting
- Carpeting / Parquet (as per the client selection)
- Entertainment center with Samsung TV with BOSE sound system.
- Large full-length windows with panoramic views port and starboard (Showing as one piece from outside)
- Large, curved electronically operated, stainless steel sliding door to aft deck
- Stairs to lower-level accommodation.
- Dining area
- Satellite receiver

SALOON AREA TOILET

- Marble flooring
- Corian sink top with sink
- Mirrors
- Full size toilet
- Custom faucet and fixtures
- Custom soap dish and towel bar
- Lighting, 24v

PILOTHOUSE

- Leather upholstered Single helm Ready Made seat
- Console flats, Resin finish
- Polyester door frames
- Full view curved and tinted windshield
- Alarms for engines, reduction gears and generators, audible and visible
- Electronic engine controls
- Steering Wheel
- Master control panel with ac/dc circuit breakers
- Lighted instrumentation
- Dashboard (console)
- Wipers 24V
- Safa leather seating

GALLEY

- Corian counter top and serving top
- Polyester galley cabinets and storage lockers with actuator latches
- Sink with strainers
- Grohe faucet with sprayer
- Instant hot water
- Tiles or teak flooring
- Cabinets and storage lockers below counter top
- Dish washer
- Electric oven
- Microwave with grill
- Chimney fan for stove
- Refrigerator/freezer with icemaker
- Lighting 24v
- Breakfast Seating

OWNER'S BEDROOM

- King size bed with base leather upholstered with polyester finish wood trim
- Seats with leather upholstery
- Polyester finish stands with storage and drawers
- Built-in polyester finish desk with matching chair
- Entertainment center with Samsung television, Bose sound system
- Direct and indirect designer lighting
- Custom built-in mirrors
- Reading lights
- Custom lamps
- 220v outlets
- Custom wall and ceiling coverings, fabrics and trim
- Custom carpet / Parquet
- Satellite receiver
- Dressing room with polyester finish storages and drawers

OWNER'S TOILET & SHOWER

- Vanity with custom sink and storage below
- Custom faucets and fixtures
- Custom towel bar, soap dishes and tissue holder
- Custom mirrors
- Cabinets
- Full size toilet
- Inlaid Tiles floor
- Exhaust fan
- Custom lighting
- Tiles flooring
- Shower room
- Electric vacuum flush W.C system

MASTER BEDROOM

- Queen size bed with base leather upholstered with polyester finish wood trim
- Polyester finish stands with storage and drawers
- Samsung television
- Leather upholstered seat with polyester finish side
- Cabinet with storage and drawers
- Direct and indirect designer lighting
- Custom built-in mirrors
- Reading light
- Custom lamps
- 220v outlets (120v US.)
- Portholes, S.S stainless steel
- Custom wall and ceiling coverings, fabrics and trim
- Custom carpet
- Satellite receiver

COMMON BATHROOM FOR MASTER & GUEST

- Vanity with custom extend sink and storage below
- Custom faucets and fixtures
- Custom towel bar, soap dishes and tissue holder
- Enclosed individual shower
- Custom mirror
- Cabinets
- Individual size toilet
- Exhaust fan
- Custom lighting
- Receptacle, 120v ground fault
- Tiles flooring
- Shower room
- Electric vacuum flush W.C. System

VIP BEDROOM

- King size bed leather upholstered with polyester finish wood trim
- Polyester finish stands with storage and drawers
- Samsung television
- Leather upholstered seat with polyester finish side
- Cabinet with storage and drawers
- Direct and indirect designer lighting
- Custom built-in mirrors
- Reading light
- Custom lamps
- 220v outlets (120v US.)
- Custom wall and ceiling coverings, fabrics and trim
- Custom carpet
- Satellite receiver

VIP ROOM'S TOILET & SHOWER

- Vanity with custom extend sink and storage below
- Custom faucets and fixtures
- Custom towel bar, soap dishes and tissue holder
- Enclosed individual shower
- Custom mirror
- Cabinets
- Individual size toilet
- Exhaust fan
- Custom lighting
- Receptacle, 120v ground fault
- Tiles flooring
- Shower room
- Electric vacuum flush W.C. System

GUEST STATEROOM (2 UNITS)

- Three beds with bases, leather upholstered with polyester finish wood trim, storage and drawers below
- Samsung television
- Direct and indirect designer lighting
- Large closet
- Reading lights
- Custom lamp
- 220v outlets
- Open-able porthole, stainless steel
- Custom wall and ceiling coverings, fabrics and trim
- Custom carpet
- Polyester finish desk with stools
- Satellite receiver

GUEST STATEROOM'S TOILET & SHOWER (STBD)

- Vanity top with custom extended sink and storage below
- Custom faucets and fixtures
- Custom towel bar, soap dish and tissue holder
- Shower
- Custom mirror
- Mirrored cabinets
- Toilet
- Exhaust fan
- Custom lighting
- Receptacle, 120v ground fault
- Custom décor
- Electric vacuum flush W.C. System

CREW CABIN

- Two bunk beds (4 Beds)
- Storage under bunks
- Large full width closet with storage, shelves and drawers
- Overhead lighting and reading lights
- Large deck hatch with folding ladder for access
- 220v outlets

CREW CABIN, TOILET & SHOWER

- Vanity with ceramic sink and storage below
- Mirror
- Overhead cabinet
- Overhead lighting
- Shower
- Full Size Toilet
- Mirrors
- 220v outlets

CREW LIVING

- Samsung TV
- Satellite receiver
- Lighting
- Mini kitchen
- Washing machine
- 220v outlets

CAPTAINS CABIN

- Single bed
- Storage under bed
- Closet
- Lighting
- 220v outlets

SAFETY EQUIPMENTS

- 12 Life Jackets SOLAS Approved
- 6 Life Rings Plastimo.

NAVIGATION AND COMMUNICATIONS

- HD Color display radar dual system
- Ray-chart Color chart Plotter
- GPS Sensor
- Echo sounder 10" Color
- Auto Pilot
- Marine VHF with DSc / Loud Hailer with dual stations
- Digital and Magnetic compass
- Multi Vie Gauges : Temp / Speed / Wind / Depth

OPTIONAL ITEMS

- Stabilizer
- Internet Satellite
- Crane
- Rubber Boat
- Lift Raft
- Weather Fax
- Intercom System
- Under Water Camera

About Al Shaali Marine

Established in 1979 by Abdullah AlShaali, AS Marine has inherited the proud boat building tradition that has earned the legendary Arabian seafarer and his crafts a proud place in world maritime history. Translated into modern design and technology, this tradition remains the foundation and mission of the AS Marine boats' building process. From the factory complex in the United Arab Emirates, a wide product range of luxury flybridge yachts are manufactured for domestic and worldwide markets.

AS Marine has received numerous awards from leading international bodies and won many of the industries famous quality certificates. AS Marine shows a combination of talent where design pleases, performance excites, and seagoing dependability means the safety and comfort of the owner and guest. Our signature is beauty and pride, and our clients receive nothing less. Look no further, you can truly have it all! AS Marine is making smart boating decisions easy.





📍 Al Shaali Marine, New Industrial Area P.O.Box787
☎ +971 6 743 6443 ✉ info@alshaalimarine.com
🌐 www.alshaalimarine.com